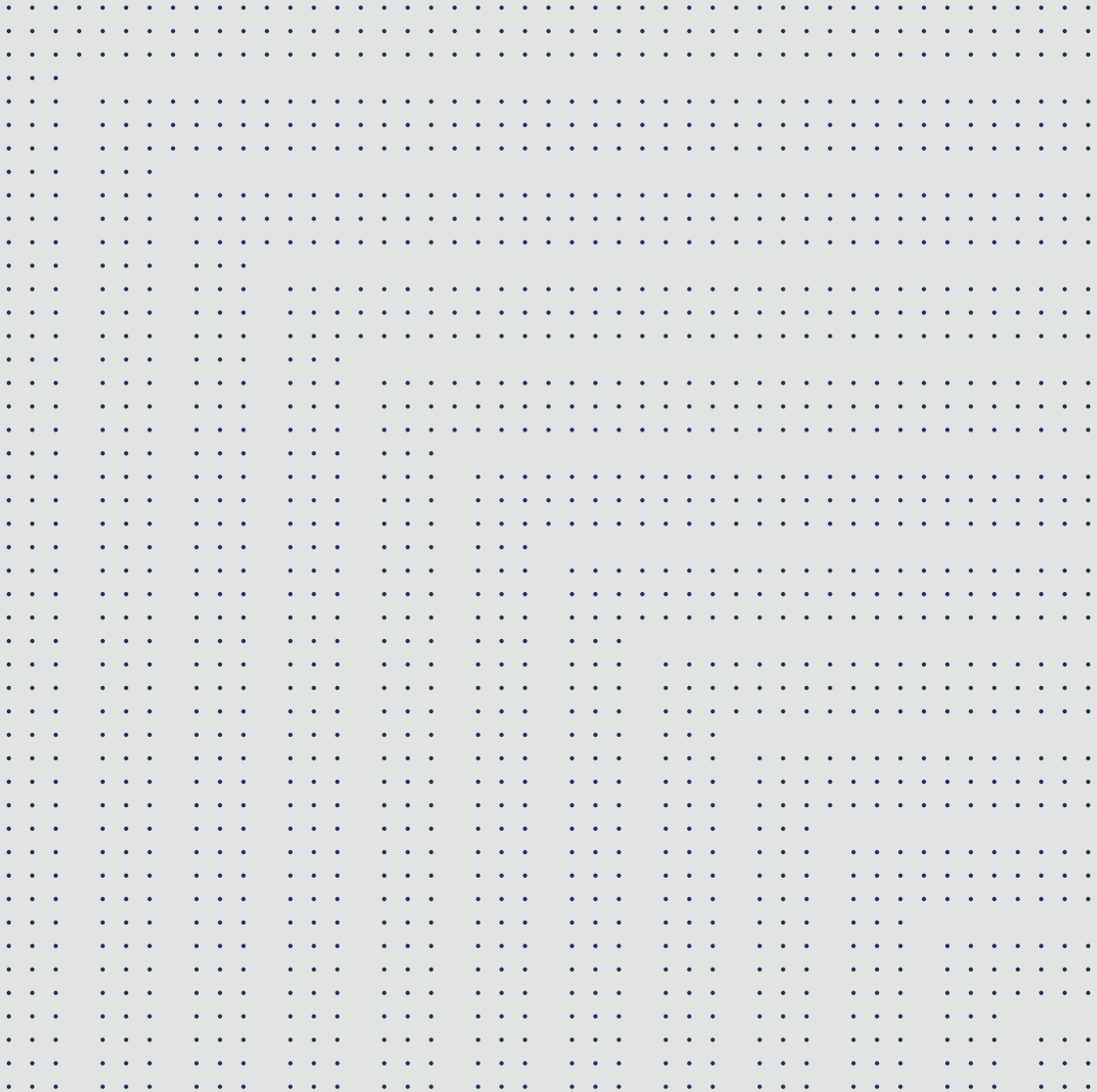




**Security Center  
Synergis.**

Complete access control



# The security behind closed doors

Providing a safe, welcoming working environment is necessary for any organization to flourish. But finding a balance between security and free movement isn't always easy. Too restrictive, and it hampers the flow of people. Too permissive, and your security is compromised.

Security Center Synergis is an access control system that helps you find the right balance. Restrict access to critical or important areas, while allowing seamless movement elsewhere. Benefit from complete visibility of all activity to confidently protect your people and assets. And equip your team to react to threats at a moment's notice – restricting access or locking down an entire building.

Synergis is both flexible and adaptable. It improves on traditional access control models – that require proprietary hardware – by letting you choose your hardware. Through the Genetec Security Center platform, you adopt a unified and comprehensive security strategy where access control is merged with video, communications, intrusion, and other systems. So you enhance collaboration and sharing, improve your operational efficiency, and protect your organization against emerging threats.

# With Synergis, you are empowered and properly equipped to protect your organization and address threats.



## Respond with confidence

With a global view of your security situation at any given time, you are better equipped to make the right decisions at the right time, and respond with confidence. As soon as a situation arises, quickly take action: notify security personnel, trigger a threat level, or lock down a door or a building. And as you proactively prepare for any scenario, you're never caught off guard.



## Enhanced cyber security

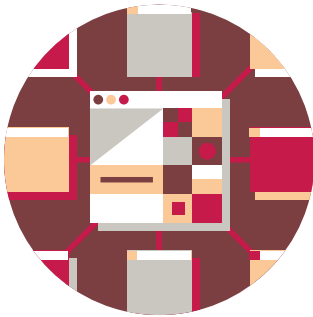
As the cyber threat landscape evolves, organizations need to protect cardholder and visitor identities, maintain secure communications, and defend other critical data from cyber attacks. With native end-to-end encryption from the reader to Synergis software, and advanced claims-based authentication, you instantly augment security and protect your organization's privacy.



## A unified system

Make clear, timely decisions based on a richer understanding of your security environment. When you consolidate access control with video, intrusion, and communications through Security Center, you reach higher levels of awareness and get greater operational efficiency. Not only do you monitor everything through a single pane of glass but you also take action in a direct, coordinated way.

# It's a modern access control experience that reduces your total cost of ownership.



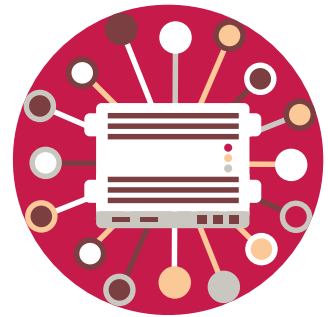
## Choose your hardware

Synergis differentiates itself from traditional, proprietary access control. By supporting an ever-growing array of widely deployed access controllers and electronic locks, it gives you newfound flexibility while closely safeguarding the long-term viability of your investments.



## Move to a single card approach

When your people travel across your locations, a consistent experience with global cardholder management is key. Centrally manage all your cardholders and credentials, automatically synchronize changes, and move to a single card approach so your colleagues never have to feel like visitors. It will lower costs, and increase operational efficiency as you eliminate redundant activities.



## Maintain less infrastructure

Deploy Synergis Cloud Link appliances at all locations as your organization expands across one or more sites. Control the volume of hardware you need, and streamline connectivity, communications, and security. With a scalable and efficient architecture, you immediately benefit from the savings.

# Quotes from our customers

Synergis is an established, flexible, market-leading access control system. Here are the words of some of our customers.

“At Canary Wharf Group, we pride ourselves on being at the forefront of technology. When we bring potential clients through our control room, the system provides the wow factor that helps us sell our business district. This system helps us convince our clients how secure they will be here, and how efficient our security team is.”

**Canary Wharf Group**

“We will never be in the same position as with our older system, where we were restricted to one vendor, locked into their offering – climbing prices and eventually faced with the need to rip-and-replace our old system. We are free to choose the devices that best suit our needs.”

**University of Hull**

“We started with 12 cameras and a few doors; now we’re closing in on 700 cameras and 500 doors – all connected to our city infrastructure. It’s really impressive to see where we’ve come from, what we can do, and what the future holds for our city. We’ve definitely chosen the right platform as Security Center gives us the flexibility to achieve any objective.”

**City of Lakeland**

“Setting the door schedules makes our lives so much easier. Our operators still have the flexibility with the Synergis access control system to override certain doors, or make changes when needed, so it remains fluid for our team and operations.”

**Levi’s® Stadium**

# The world of Synergis

With Synergis, organizations of all sizes heighten security and get a better understanding of who is trying to access their buildings. Here's a closer look at who can benefit.







# Who are Synergis customers?



## A retail store

Jamie owned a downtown jewelry store. It was a high-security atmosphere where small, precious goods required meticulous protection. Using Synergis, Jamie could give clearance to select staff members so they could open cases. She could also monitor who opened cases in real time and, because she had deployed wireless protection to her jewelry case, she was able to manage locks, handle access decisions, and log events in real time. So, at the end of each day, Jamie saw the whole picture, and understood everything that had happened in her store.

From small retail stores to educational institutions and multi-site businesses, Synergis lets you protect your organization with increased confidence.

## A higher education institution

Over the past 20 years, the university grew at an impressive pace. During the daytime the campus was a vibrant place, but over the years security had been overlooked, and many students, faculty, and alumni didn't feel safe at night. Crime was negatively affecting the university's reputation and its enrollment numbers. The Security Director needed to protect the campus without interrupting the everyday flow of people. Using Synergis, students got access cards



that they use to get into dorms, pay for meals, and access and check out books from the library. He managed

everything discreetly – from day-to-day operations to big events, and even unplanned emergencies.



## A multi-site organization

With multiple offices and refinery facilities around the globe, understanding where people were in this energy business was a big challenge. It used access control readers, but they didn't tell the full story about people's

attendance, or who was where during an emergency. With so many sites to manage, the ACS maintenance was a burden on corporate IT. By moving to the cloud, they were able to focus on their business as opposed to

worrying about their ACS system maintenance. As a welcome bonus, centralized cardholder management and single-card access provided peace of mind and allowed the security team to see who's where, any time.

# The unified Genetec experience

Synergis is one of the core systems of Security Center, our comprehensive security platform. Along with video surveillance and automatic license plate recognition (ALPR) – as well as optional Genetec modules and partner add-ons – it forms a unified system that offers enhanced intelligence, security, and operations.

# Our core systems

## **Security Center Omnicast**

is a video management system that uniquely addresses your organization's video security and privacy needs. Efficiently manage and monitor HD video, and choose from an ever-growing range of industry-leading cameras.

## **Security Center Synergis**

is an access control system that lets you manage the flow of people coming into your buildings. It secures your organization, simplifies your operations, and ensures you are not locked into a proprietary solution.

## **Security Center AutoVu**

is an automatic license plate recognition system. It makes it easier for commercial and municipal organizations to enforce parking, optimize traffic flow, and identify and track vehicles of interest.

# Our optional modules

## **Plan Manager**

offers interactive and graphical mapping, allowing you to visualize and manage security environments. Dynamically navigate through facilities and oversee a greater number of cameras and doors. It provides complete and real-time coverage for both small and large multi-site environments.

**Sipelia Communications Management** enables SIP-based communications between operators and intercom devices. When

unified in Security Center, intercom communications are linked to your security applications, significantly improving your security team's awareness and facilitating collaboration.

## **Security Center Mobile**

gives you remote access to Security Center through a suite of mobile apps. View live or recorded video, control remote cameras, and review access control events and system alarms.

## **Security Center Web Client**

allows you to take control of your security system from anywhere you can use a web browser. Monitor cameras, search for and review access control events and system alarms, export video, and manage cardholders and visitors.

# Our built-in key features

**Security Center Federation** provides centralized monitoring, reporting, and alarm management across multiple remote sites and locations, streamlining your global security.

**Global Cardholder Management** lets you easily synchronize cardholders across different locations. You issue one card that accesses across multiple sites, reducing cost and effort at the same time.

**Intrusion Panel Integration** allows you to monitor intrusion status and alarms alongside video and access control, as well as eliminate false alarms and associated costs.

**Failover** offers continuous server access that can tolerate hardware failures without any system interruption.

**Threat Level Management** lets you quickly change the behavior of your system in response to changing security conditions.

**Cloud Archives** gives you the capacity to store video recordings in the cloud.

**Active Directory Integration** synchronizes Windows accounts with Security Center administrator and cardholder accounts, so you save valuable time and eliminate human error.

**SDK Integration Tools** allow you to augment Security Center by integrating new devices, capabilities, and custom functionality.

# Our partner add-ons

**Visualization:** *video walls, dashboards, AutoCAD.* Get an intelligent, structured view of your security environment. See the big picture with video walls that display more video, images, and data. And, with seamless integration with Security Center, overall situational awareness is enhanced.

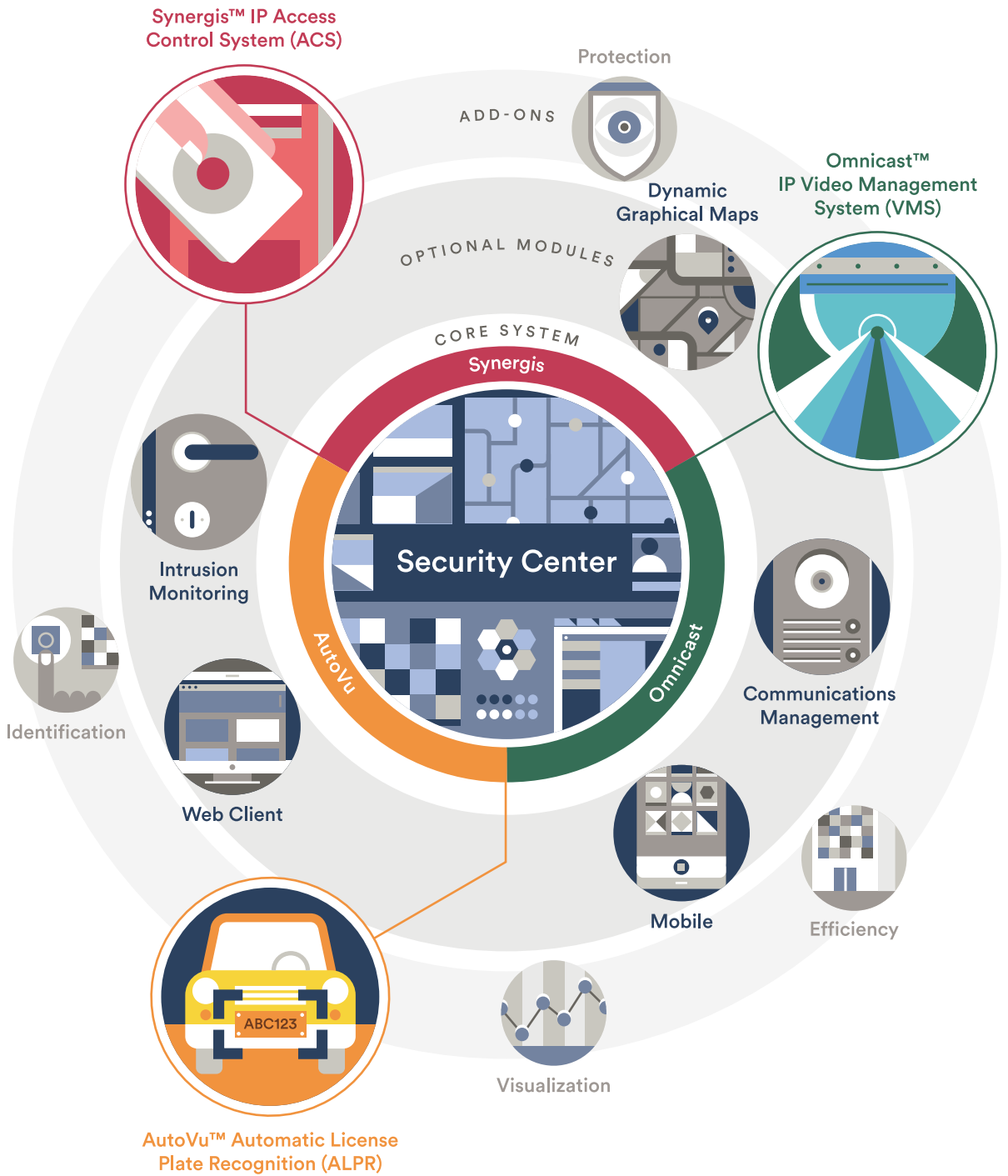
**Identification:** *face recognition, biometrics, ID scanning.* When an access card isn't enough, control entry with

seamless, non-intrusive, and secure biometric credentials. Identify people through facial recognition technology and use multi-factor authentication to increase security.

**Protection:** *intrusion, gunshot and perimeter detection, asset management.* Make use of various sensors to improve your monitoring and decision making. Integrate video and audio analytics to automate detection and benefit from smarter forensics

investigations. And augment physical security with video analytics to protect your perimeter, while ensuring personal privacy.

**Efficiency:** *building automation, parking systems, destination management.* Integrate building automation and intelligent parking systems to Security Center. Manage all elevator traffic from your security platform, giving you more control and visibility of building activity.



# A safe, more secure environment

From smaller sites to large, multi-site organizations, Synergis is an intuitive and adaptable access control solution that can be tailored to your needs. It helps you manage the flow of access to your site – whether it's a high-security campus or an institution where free movement is paramount. And because Synergis integrates a growing and versatile selection of hardware from leading manufacturers, you can install the systems that work best for your organization.

## **Corporate Headquarters**

### **Genetec Inc.**

2280 Alfred-Nobel Blvd.,

Montréal QC H4S 2A4

Canada

Toll Free: +1 866 684 8006

Canada & USA:

Tel: +1 514 332 4000

[genetec.com](http://genetec.com)

## **© Genetec Inc., 2017**

Genetec, Omnicast, Synergis, AutoVu, the Genetec Logo, and the Mobius Strip Logo are trademarks of Genetec Inc., and may be registered or pending registration in several jurisdictions.

All images are used for illustrative purposes only

